



# VAIS TECHNOLOGY

[www.vaistech.com](http://www.vaistech.com)

## Owner's Manual

# GSR

## Generation 2

## SiriusXM Satellite Radio interface

(SXV300 SiriusXM Tuner required)

### Model GSR-TY52

iOS users limitation see page 11



GSR-TY52-MAN

TOYOTA



**TOYOTA**

**DODGE** //



**HONDA**



**SUBARU**



**mazda**



**Jeep**



**PORSCHE**



**Mercedes-Benz**

Installation

**4**

Radio Controls for SiriusXM Source

**7**

Entering the Browsing Menu

**8**

User Interface - Channels, Presets, Categories

**9**

Switch USB Sources (iPhone)

**11**

Warranty

**12**

**⚠ WARNING****DO NOT DISASSEMBLE OR ALTER**

Doing so may result in an accident, fire or electric shock

Do not block the airbag

Do not mount product or any added audio and/or video equipment where it can obstruct the operation of any safety devices such as the airbag.

Distraction warning

Do not let product or any added audio and/or video equipment distract you while you are driving.

**BEFORE WIRING, DISCONNECT THE CABLE FROM THE NEGATIVE BATTERY TERMINAL**

Before starting any installation work, you must wait 90 seconds after turning the ignition switch to the LOCK position and disconnecting the negative (-) terminal from the battery. The supplemental restraint system (airbag) is equipped with a backup power source. If installation work is started less than 90 seconds after disconnection of the negative (-) battery terminal, the SRS may deploy. When the negative (-) terminal cable is disconnected from the battery, the clock and audio systems memory will be erased. Before starting installation work, make a record of the clock and audio systems memory settings. When installation is complete, reset the clock and audio systems to their previous settings. Power tilt, power telescopic steering column, front power seats, power mirrors, and power shoulder belt anchorage are equipped with a memory function. The rear power seat is not equipped with a memory function. e and they can make a record of the memory contents, rear power seat is not equipped with the memory function. When installation is complete, it is necessary to readjust the features to their previous settings. Never use a backup power supply (such as another battery) during installation work to avoid losing these memory settings.

**⚠ CAUTION****DO NOT SPLICE INTO ELECTRICAL CABLES**

Never cut away cable insulation to supply power to other equipment. Doing so will exceed the current carrying capacity of the wire and result in fire or electric shock.

**DO NOT ALLOW CABLES TO BECOME ENTANGLED IN SURROUNDING OBJECTS**

Cables or wiring that obstruct or get caught on places such as the steering wheel, shift lever, brake pedals, etc. can be extremely hazardous.

**DO NOT INSTALL IN LOCATIONS WITH HIGH MOISTURE OR DUST**

Moisture or dust may result in product failure.

**HAVE THE WIRING AND INSTALLATION DONE BY EXPERTS**

The wiring and installation of this product requires special technical skills and experience.

**USE ONLY SPECIFIED ACCESSORY PARTS**

Use of other than specified parts may damage product internally.

Follow the operational and installation manuals.

**YOU SHOULD READ AND FAMILIARIZE YOURSELF THOROUGHLY WITH THE FOLLOWING INFORMATION PRIOR TO INSTALLING AND USING THIS UNIT. IN ADDITION, YOU MUST CAREFULLY READ AND FOLLOW THE INSTALLATION SCHEMATICS/INSTRUCTIONS FOR THE PRODUCT AND THE VEHICLE IN WHICH IT IS BEING INSTALLED. FAILURE TO FOLLOW INSTALLATION INSTRUCTIONS MAY DAMAGE THE PRODUCT AND THE VEHICLE, WILL VOID THE PRODUCT WARRANTY, AND MAY VOID THE VEHICLE WARRANTY**

Check your local laws

Some States/Provinces or other governmental jurisdictions (such as cities) may have laws that prohibit the operation of a video screen within the sight of the Driver. If you have purchased such a product, you should use the product only in locations where it is legal to do so, and if you do use the product, set up the screen so it is only visible to passengers.

**TROUBLESHOOTING**

Should this product fail to operate properly, please contact your Dealer or our Customer Service Department at [info@vaistech.com](mailto:info@vaistech.com).

**i IMPORTANT**

This unit is an interface adapter for Toyota/Scion head unit to control the SiriusXM Tuner SXV300 (SOLD SEPARATELY).

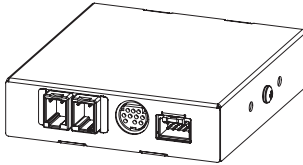
**i About SiriusXM Satellite Radio Operation**

The unit may refuse to change the channel if your reception is going ON and OFF.

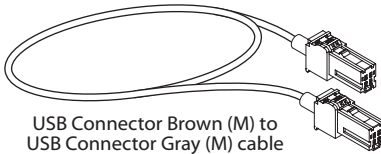
Please wait until your reception stabilizes in order for the unit to allow you to change the channel easily.

Due to bad reception in some areas, SiriusXM Satellite Radio may not work and/or not able to display text.

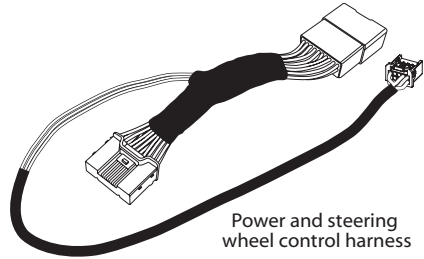
## What's Included



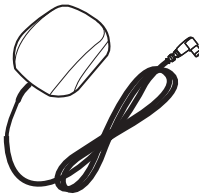
GSR-TY52  
Interface Adapter



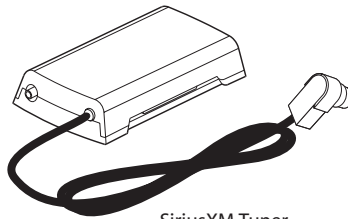
USB Connector Brown (M) to  
USB Connector Gray (M) cable



Power and steering  
wheel control harness



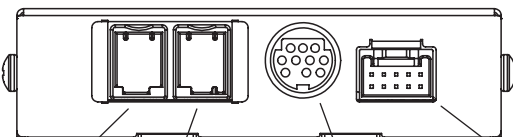
Vehicle Antenna



SiriusXM Tuner  
SXV300

**Vehicle Antenna and  
SiriusXM Tuner SXV300  
are included in GSR-TY52  
Tuner Kit only**

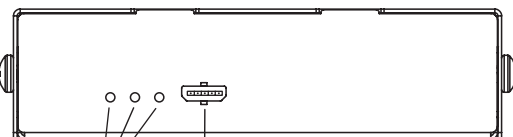
## GSR Connectors and Ports



# GSR

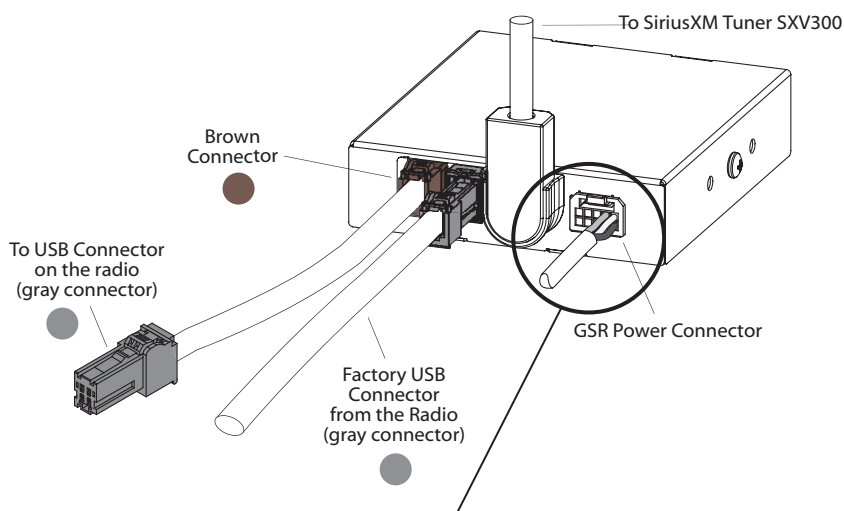
Model: GSR-TY52

Brown USB  
interface  
connector      Gray USB  
interface  
connector      Interface connector  
for SiriusXM SXV300 Tuner      Power connector

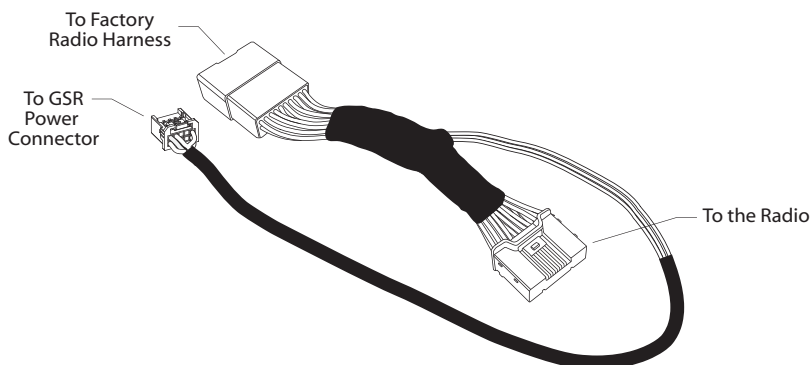


LEDs      Not Used

### Connecting GSR



### Power/Steering Wheel Control Harness Connection



#### CAUTION

Make sure all connectors are plugged in all the way.

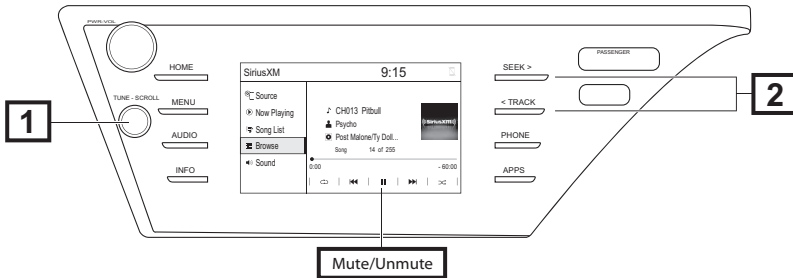
### About GSR (Gen 2) firmware update

Check GSR-TY52 product page to see if update is available:

<https://www.vaistech.com/product/gsr-ty52-w-tuner-kit/>



# TOYOTA



- 1** Tuning Knob - switch to next available channel, depending on direction of rotation. (Tuning knob may not be available while radio is loading channel list.)
- 2** "Track Seek+" and "Track Seek-" switch to next available channel.  
Long Touch on "Track Seek+" and "Track Seek-" switch to next available Preset.

## Important!

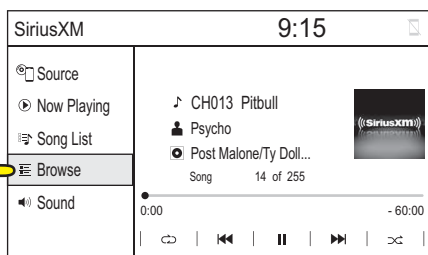
Some functionality is not available while the car is moving due to Toyota safety feature.

**iOS users limitation see page 11.**



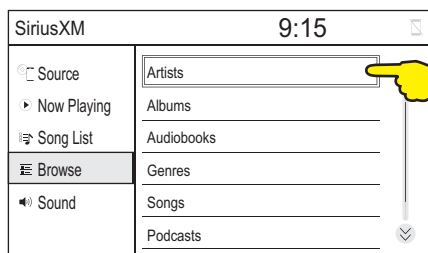
A

Touch to select Browse

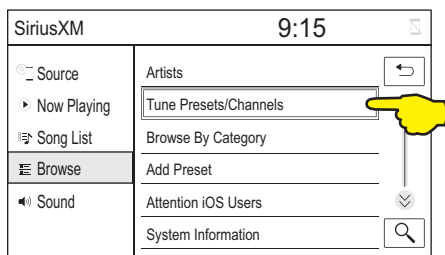


B

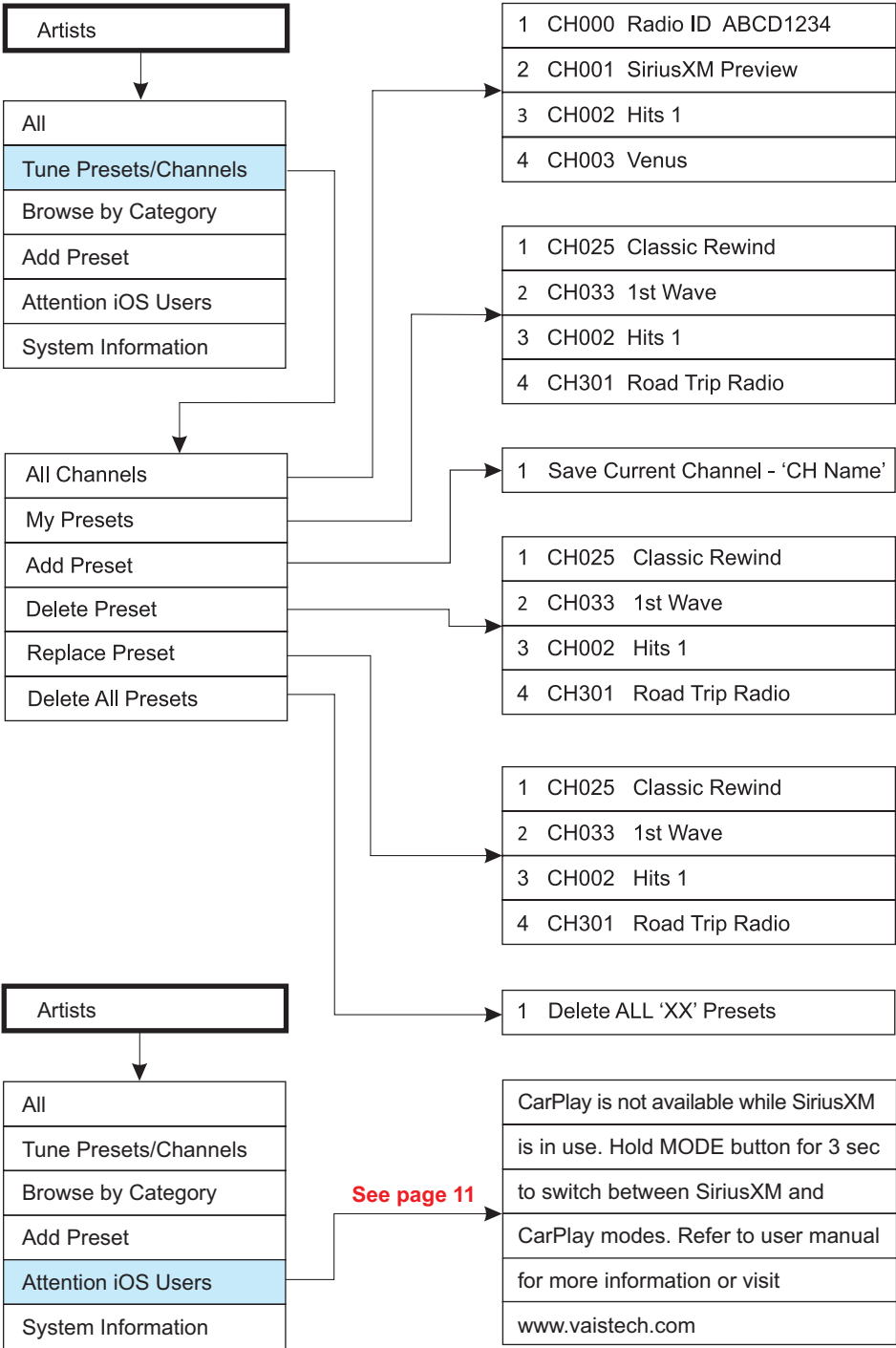
Touch to select Artists

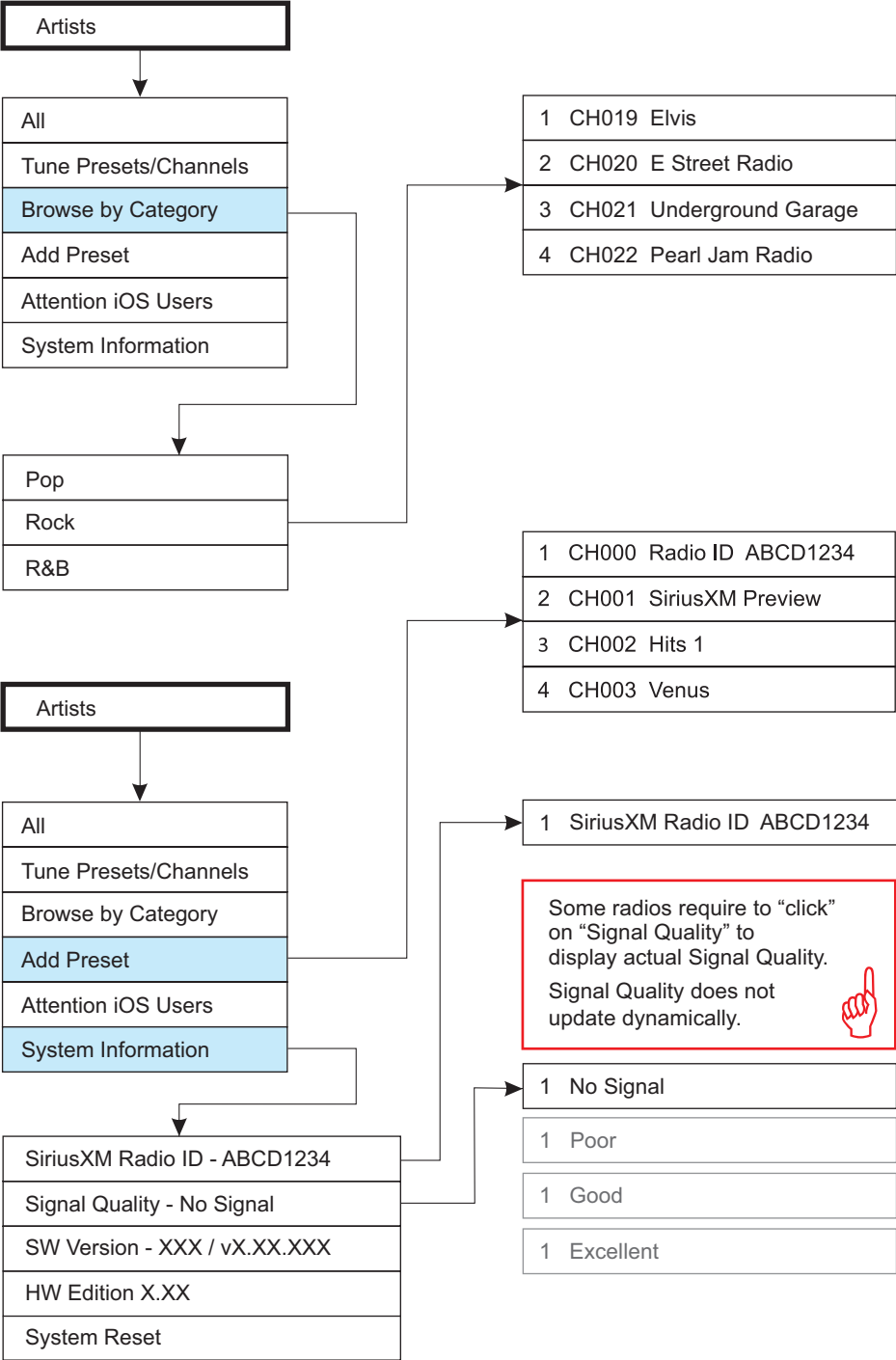


C









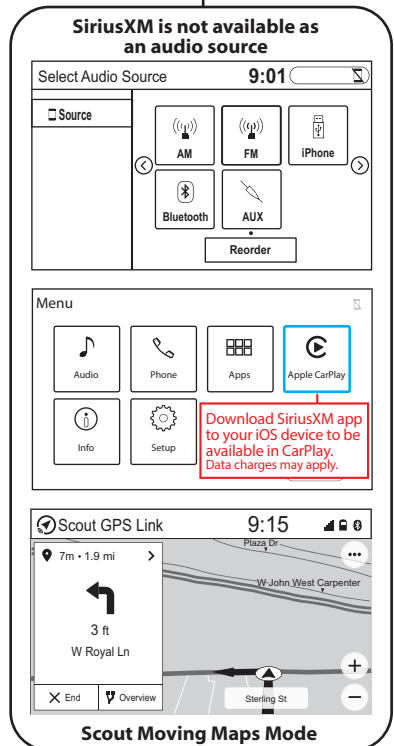
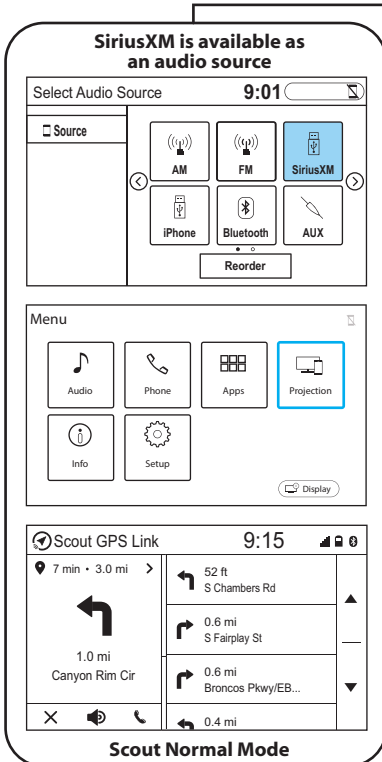
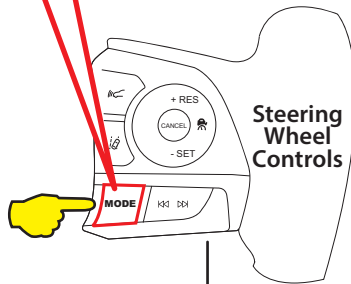


# TOYOTA

These instructions only apply to **iPhone** users. **CarPlay** and **Scout** moving maps may not be used while **SiriusXM** is in use. This procedure allows you to toggle between the two functions while an **iOS** product is connected.

## Hold the MODE Button for 3 Seconds

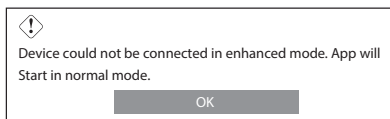
Press and hold the **MODE** button for 3 seconds, and continue holding the mode button after the audible beep is heard, to toggle between the two modes.





## **Troubleshooting**

### **iPhone Users - Scout GPS Link Error Message**



Scout enhanced mode is not available when listening to SiriusXM. See page 11 for switching Scout modes.

### **iPhone Users - CarPlay Error Message**

A compatible device is not connected or the "Apple CarPlay" setting is turned off. Please disconnect all USB devices and then turn on "Apple CarPlay" in the Setup menu.

CarPlay is not available when listening to SiriusXM. See page 11 for switching modes.

---

## **Warranty**

Warranty is available for download: <https://www.vaistech.com/download/15244/>

To request a paper warranty copy please contact us:

VAIS Technology  
Warranty Department  
8811 American Way  
Unit 125  
Englewood, CO 80112  
720-733-2348  
info@vaistech.com



GSR-TY52-MAN